



Arden Kelly & Beatrice McGuire

# TRASH PALACE

**PRODUCTION DESIGN PORTFOLIO**

# INITIAL CONCEPT

WE HAVE CHOSEN TO DESIGN A TRASH PALACE FOR OUR PRODUCTION DESIGN ASSIGNMENT. WE DECIDED ON THIS CONCEPT DUE TO OUR SHARED LOVE FOR SURREAL SPACES THAT CREATE A RICH CONTEXT IN WHICH A CHARACTER AND STORY CAN EXIST.

OUR SET EXISTS AT THE BOTTOM OF A GARBAGE BAG, WHERE OUR CHARACTER "COCKROACH" HAS BUILT HIS HOME FROM DISCARDED PIECES OF RUBBISH. THIS CONCEPT ALLOWS US TO EXPLORE THEMES OF SUSTAINABILITY THROUGH USING RECYCLED MATERIALS TO BUILD ENLARGED RUBBISH PIECES AND THE IDEA OF FINDING BEAUTY IN DISCARDED/OTHERWISE OVERLOOKED THINGS. ADDITIONALLY, TRASH PALACE ALLOWS US TO PLAY WITH BOLD COLOUR AND TEXTURAL CHOICES AS WELL AS CHALLENGING AND EXTENDING OUR CRAFT SKILLS WITH AMBITIOUS DESIGNS AND CONSTRUCTION PLANS. TRASH PALACE ALSO CREATES AN INHERENTLY UNCONVENTIONAL CHARACTER THAT GIVES THE POTENTIAL FOR UNIQUE STORIES AND DIRECTION TO BE PROVIDED BY OUR CINEMATOGRAPHERS.

ONCE WE SOLIDIFIED OUR CONCEPT WE BRAINSTORMED AND THEN NARROWED DOWN A LIST OF FEASIBLE, AND INTERESTING PIECES OF RUBBISH THAT WE COULD SCALE UP TO FILL THE SPACE AND THEN DESIGNED THESE WITH INSPIRATION FROM OUR CURATED PINTEREST BOARD. WE THEN BROKE DOWN A CONSTRUCTION PLAN FOR EACH ITEM AND DEVISED A COSTUME IDEA.





Images 1,3,4: *Dipping Sauce*, photography by Maisie Cousins

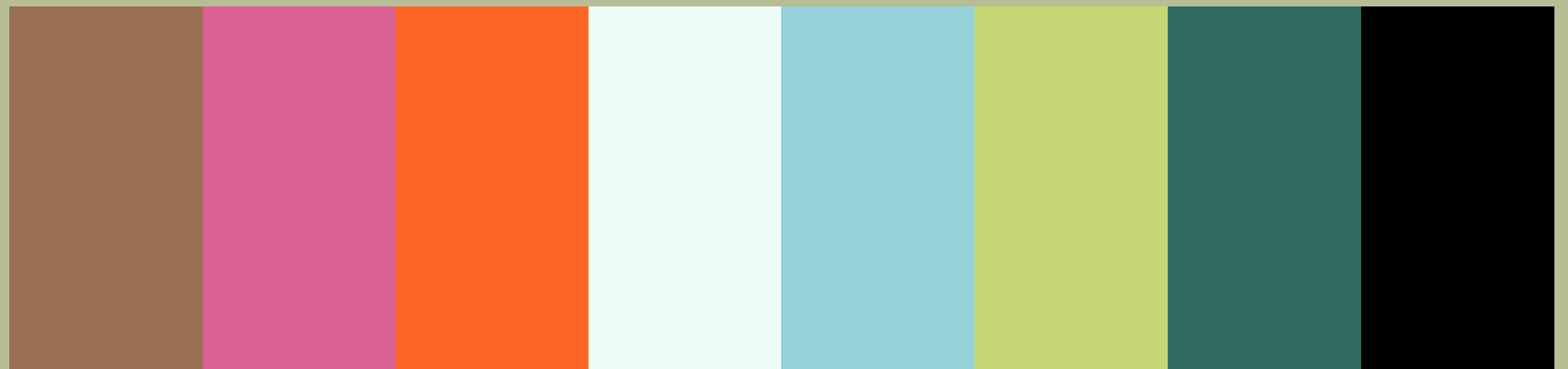
Simphiwe Ndzube: *the bloom of the corpse flower* 2020

# VISUAL REFERENCES & COLOUR PALETTE

**ORGANICS: GLOSSY, WET-LOOK/JUICY, ORGANIC SHAPES, SEGMENTS AND CELLS, CURVES, PULPY, FIBEROUS, POROUS-**

**SIMILARITIES AND  
CONSISTENCIES  
WITH:**

**NON-ORGANICS: SOFT PLASTICS,  
SHINY, GLOSSY, PLEATED, BILLOWING,  
TRANSLUCENT.**





# SET DESIGN

FRUIT STICKERS

GUM GLOB

LOVE LETTER

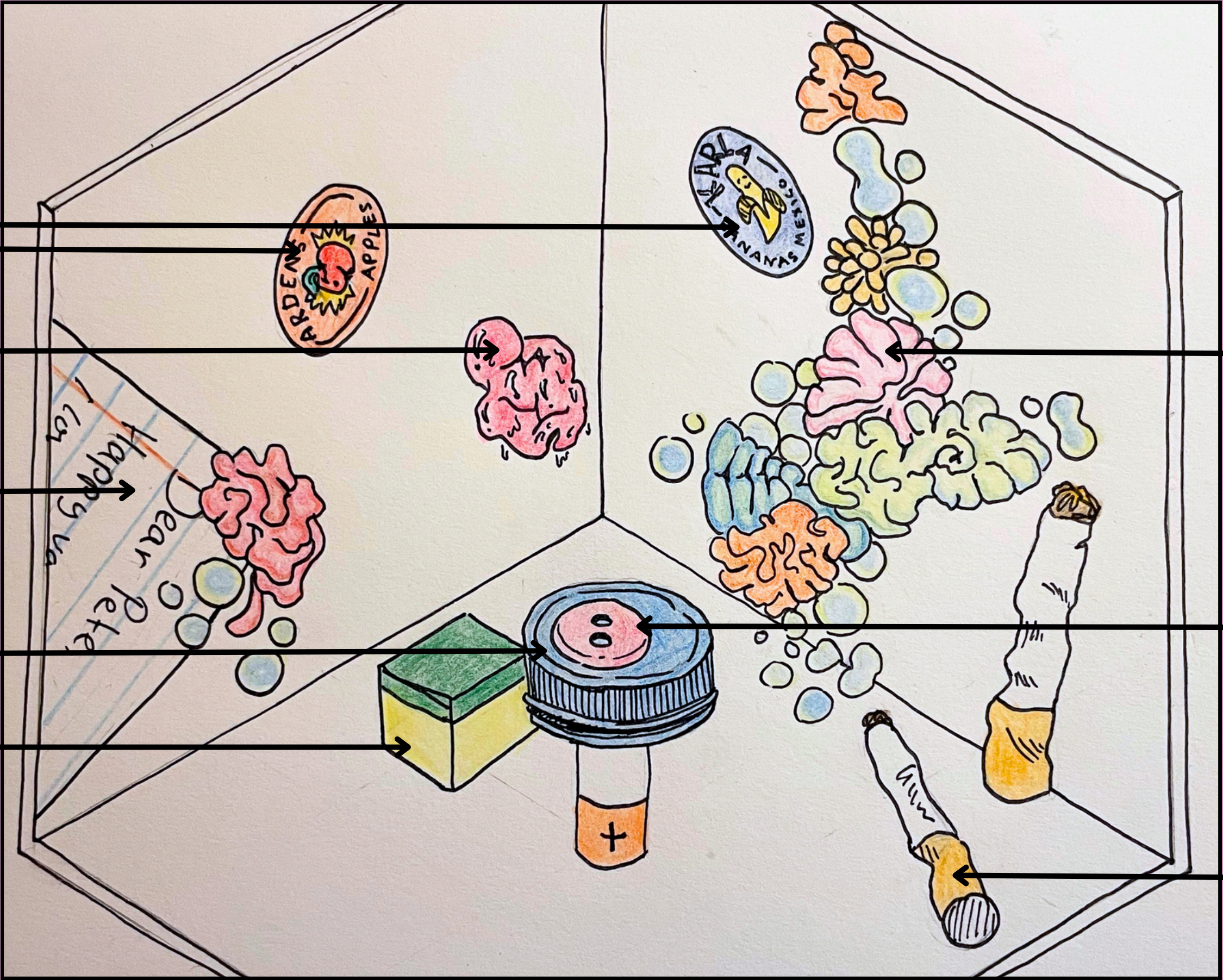
BOTTLE CAP TABLE

SPONGE SEAT

CLIMBING MOULD

BUTTON PLATE

CIGARETTES

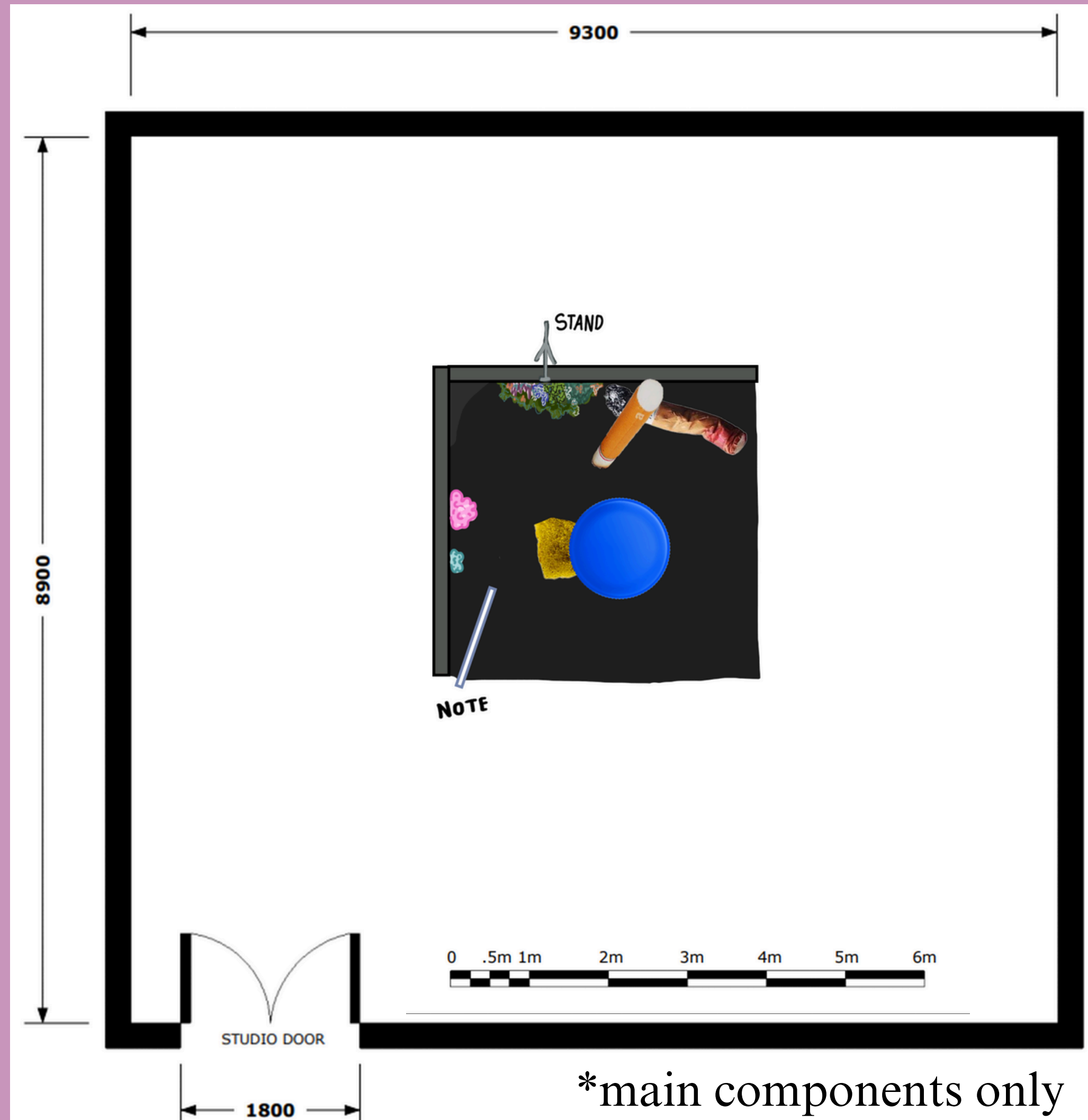


\*NOT SHOWN: PLASTIC WALLS /FLOOR AND COCKROACH FOOD



# FLOOR PLAN

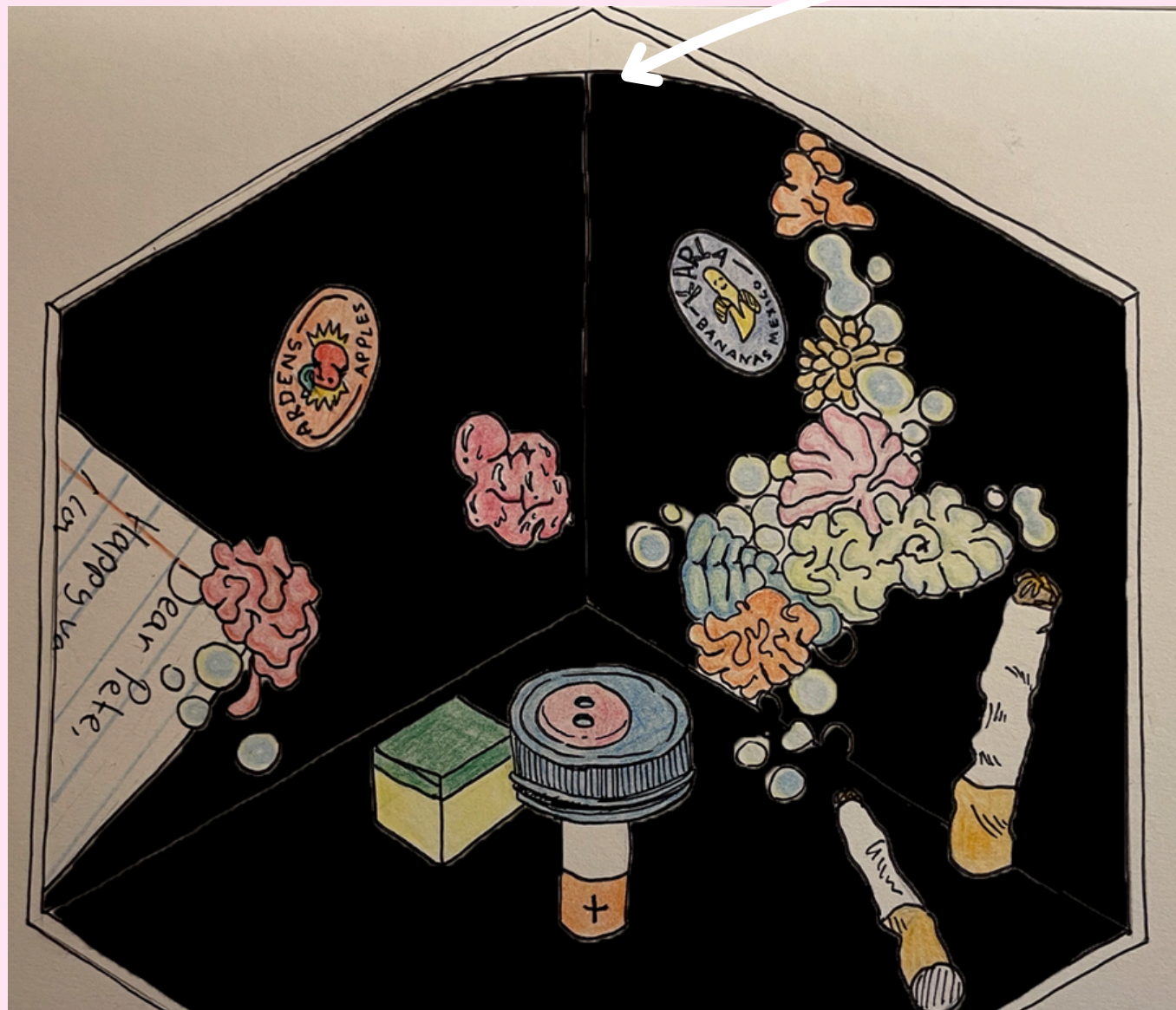
SET: <i>Trash palace!</i>		SET NO#:	
SUBJECT: <i>Production Design Elective</i>		DRAWING NO# <i>1</i>	
DATE: <i>4/08/2024</i>	DRAWN BY: <i>Arden Kelly</i>	SCALE: <b>1:50 @A3</b>	REV#:
<b>STUDIO 4</b>		<b>AFTRS</b> <small>MAKE IT. AUSTRALIAN FILM &amp; TELEVISION ARTS SCHOOL.</small>	





# CONSTRUCTION PLAN

To mimic the appearance of a garbage bag, we will drape black plastic sheets on the flats and floor, incorporating billows and pleats to add texture and variation. These textures and the plastic's reflective quality should allow Max and Jaida to bring the room to life through lighting.



We aim to round out the set corner by hanging the plastic from a curved piece of plywood that we will secure to the top of our flats.



## PLASTIC WALLS AND FLOOR



These reference images show how gathering and folding the plastic will create a more dynamic backdrop.





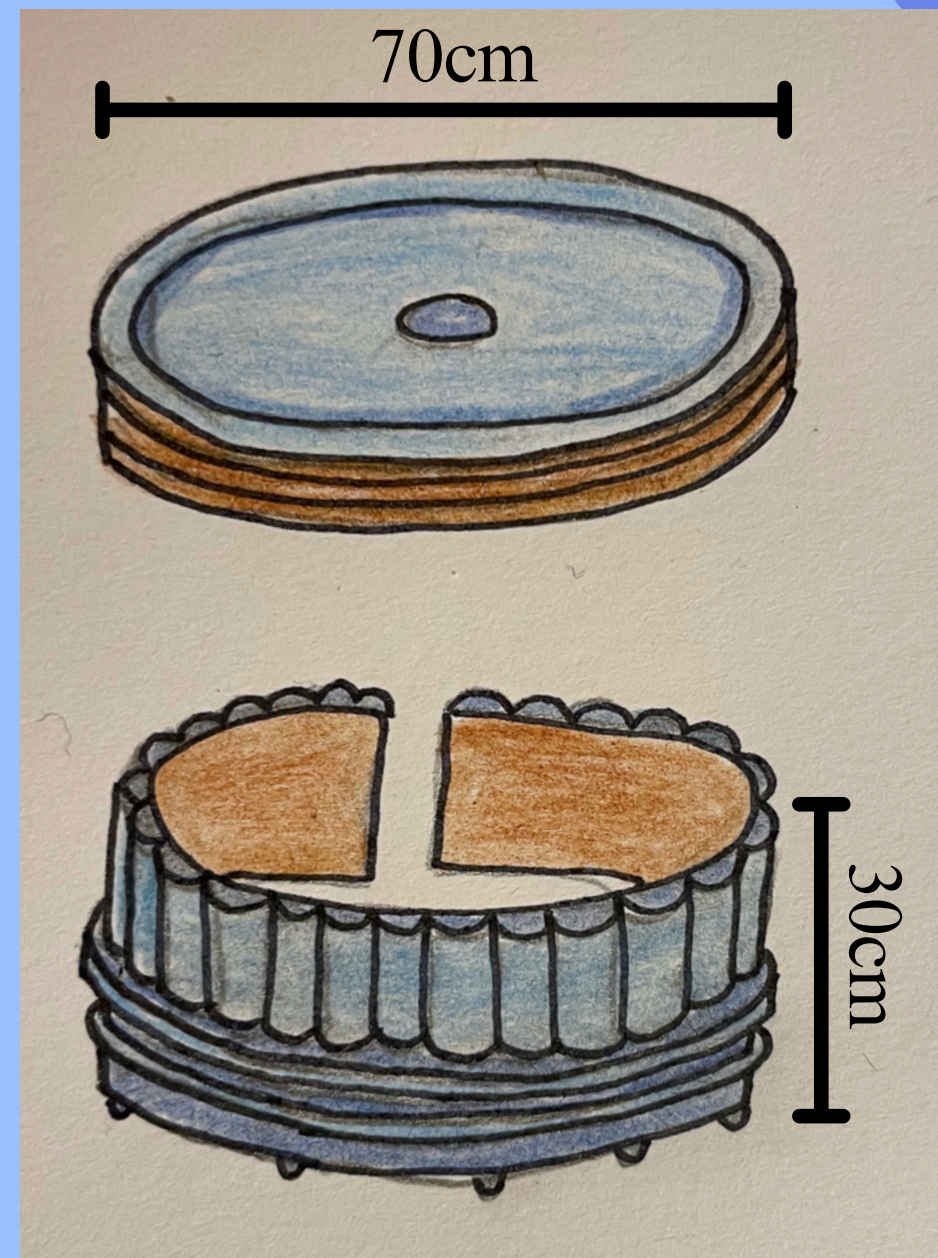
# CONSTRUCTION PLAN

## BOTTLE CAP & LIP BALM TABLE

This piece is a functioning table made up of a plastic bottle cap resting ontop of a lipbalm.

To create the bottle cap we will:

- layer circles of cardboard and plywood to create the top of the bottle cap
- attach adhesive ribbed panelling to a 220cmx30cm piece of cardboard
- secure this ribbed carboard around the circumference of the top piece
- add details to the bottom
- paint blue and finish with a gloss spray.



The bottle cap will be joined to a lip balm base. We have serval options for constructing the lip balm depending on the weight of the bottle cap lip and the availability of recycled materials. These options include PVC pipe, a foam muscle roller, or a cardboard tube.





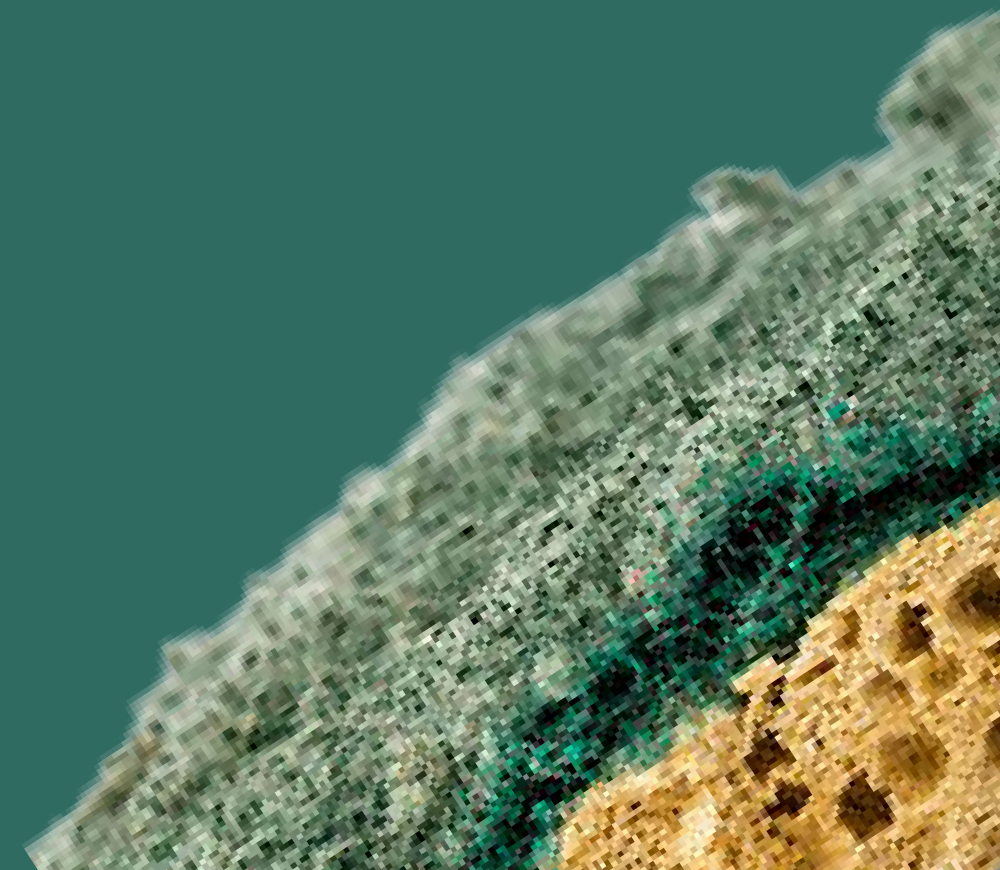
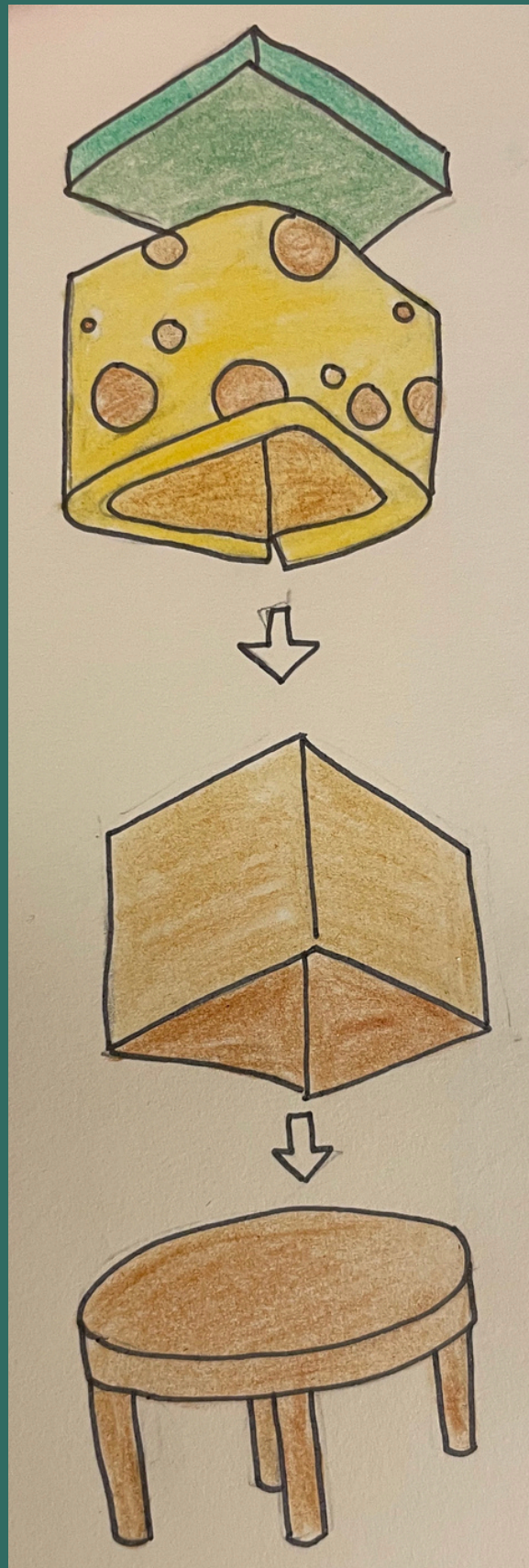
# CONSTRUCTION PLAN

## SPONGE SEAT

This piece is a functioning seat designed to look like a chunk of old manky dish sponge. The seat is made up of two components: a stool, which will bear the weight of the user, and a sponge shell.

To create the shell, we plan to:

- Shape and affix yellow mattress foam around a cardboard box.
- Remove chunks of foam to create craters.
- Deepen craters using brown paint.
- Glue roughed up green felt to the top.
- Use watered down paint and PVA glue to create crusty, dirty look.



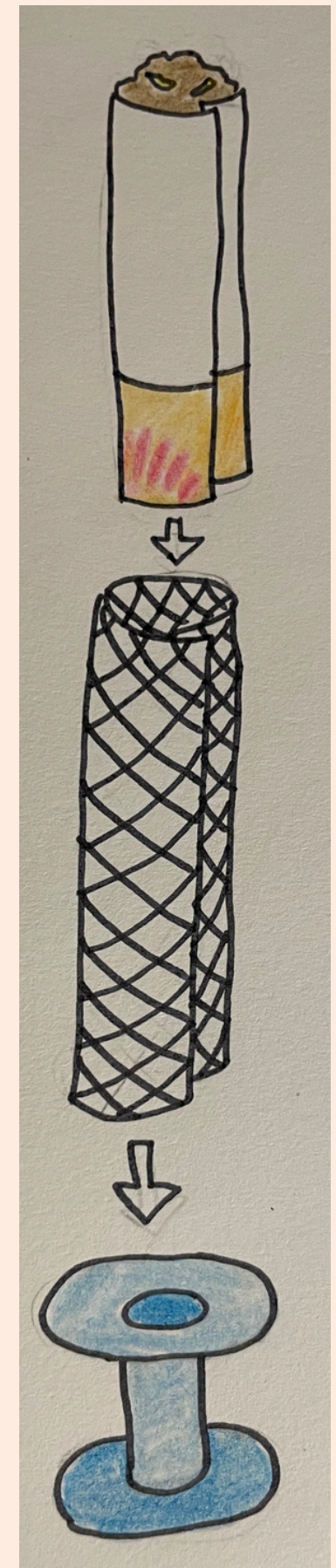


# CONSTRUCTION PLAN

## CIGARETTES



To create the cigarettes we will use a plastic spool as a base. Chicken wire will be secured around this base and then a layer of paper will cover the wire. The paper will be painted with orange and red to appear as lipstick marks. This method will allow the cigarettes to be free-standing and sturdy while also allowing us to manipulate the chicken wire to give the folded, creased look of a discarded cigarette. The ash will be made of crunched-up paper covered in a sawdust-paint mixture.





# CONSTRUCTION PLAN

## CLIMBING MOULD

To simplify the bump-in process, we decided to create a separate climbing mould piece backed with a sheet of chicken wire that can be easily added to the set. The chicken wire will be suspended from 2 high-boy stands over the top of the flats and there will be points at sides and bottom that will allow us to mount the structure to the flats.

The base will be constructed with wire and left-over foam pieces, and covered with mould made with a variety of techniques and materials including:

1. Fabric woven in and out of the chicken wire to create folded, bolbous shapes adorned with felting fibre to create fluffy spores
2. 'Cell' shaped holes cut into thin cardboard, which can be painted and shaped.
3. Paper mache shaped into folding wiggly moulds and coated with paint and fibres
4. Spores made from remaining airdry clay.
5. Applying heat gun to to colourful recycled plastics and polyester fabric scraps to create a warped, bubbling surface.



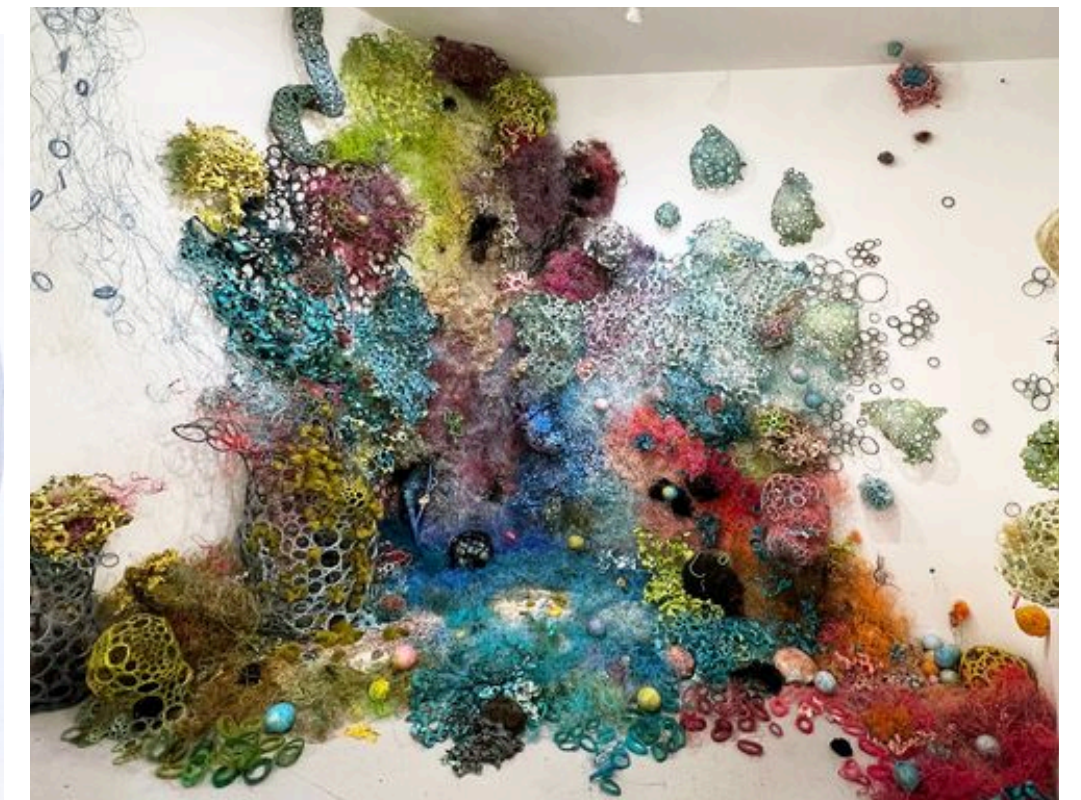
Fiona Price *'Into the Rockpool'*



Marion Jazmik



Dasha Plesen



Karen Margolis *'Synthetic Garden'*



# CONSTRUCTION PLAN



## BUTTON PLATE

To create the button plate, two plastic paint lids will be glued together, painted a bright candy colour, and sprayed with gloss. No holes are needed as they won't be seen under the cockroach's food.



## GUM BLOBS

Blobs of chewing gum stick to the side of the plastic bag in various shapes and colours.



To keep them lightweight for wall mounting, and to make economic use of materials, the blobs will be made with a thin layer of air-dry clay sculpted over a skeleton. The base skeletons will be made from recycled plastic containers & paper wrapped in tin-foil to create a knobbly gum shape with a hollow interior. The clay will then be painted bubblegum pink and mint green and sprayed with a glossy top coat to create the look of still-wet gum.





# CONSTRUCTION PLAN

## FRUIT STICKERS

The large fruit stickers will be made from A2 pieces of paper. I will create fruit sticker graphics in Photoshop and then use a projector to draw the outlines of these graphics on the paper. I will then hand paint the paper and finish with a gloss spray. The stickers will be attached to the wall with double-sided tape.

## LOVE LETTER

To create the love letter:

- Reinforce a large piece of cardboard (from a shipping box) using gaffer tape.
- Glue white butcher's paper to the cardboard.
- Paint on blue paper lines, red margin, and writing



# THE COCKROACH

Our cockroach costume will consist of a modified brown, oversized, pin-stripe suit. The oversized look will suggest the rectangular shape of a cockroach. Ideally, we will source a jacket with a coattail to further this idea. 4 arms, sewn from brown fabric and stuffed with recycled soft plastics, will be sewn to the sides of the jacket.

An oversized piece of bowtie pasta will be used as the cockroach's bowtie. This will be made of clay and painted yellow. Antennae, sewn from the remaining brown fabric and reinforced with wire will be attached to a headband.





# COCKROACH FOOD

For one of our cine's stories the cockroach will be preparing and eating a mound of cockroach food. We have decided to shape this mound of food into something that looks like a tiered cake, inspired by the molten kitsch of Vincent Olinet's cake sculptures. Olinet's work contains the vivid candy colours of our own colour palette and has a gruesome sloppiness that really appeals to us.

The combination of a lop-sided, sludgy cake base decorated with an attempt at ornateness continues the theme established in our set of finding the beauty in typically unbeautiful things and making the most of what you have. The cake will be assembled on set from prepared cake layers and a variety of icing colours. If our cines shooting angles would benefit from a larger cake than is feasible to make out of real food, we will use a styrofoam base wrapped in cling film to construct the lower 1 or 2 tiers, allowing the top portion to still be food safe.

